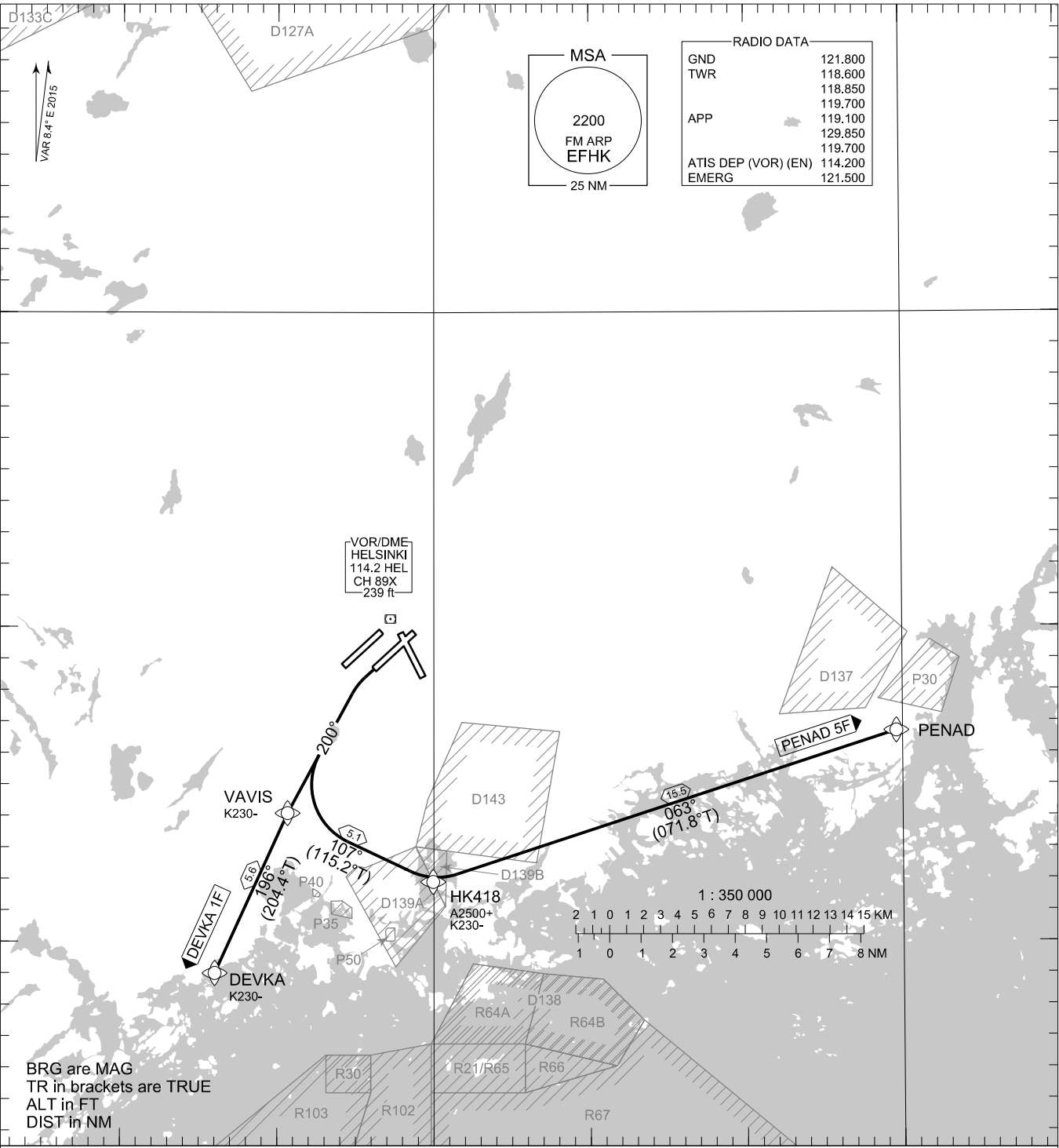


025°00'

025°30'



RNAV SID RWY 22L
DEVKA 1F PENAD 5F

NAV SPECIFICATION: RNAV 1 OR P-RNAV APPROVAL REQUIRED. OTHERWISE ADVISE ATC.

DME/DME OPS: NOT SUPPORTED

ROUTES: RNAV PROC CODING ON THE VERSO OF THE CHART

USAGE: ONLY FOR AIRCRAFT NOT EXCEEDING FLYOVER NOISE LEVEL 89 EPNdB ACCORDING TO ICAO ANNEX 16, CHAPTER 3.

SQUAWK: WHEN LINING UP SQUAWK THE ASSIGNED CODE

ADDITIONS TO SID: INSTRUCTIONS CONTAINING DEVIATIONS FROM THE SID (TEMPORARY ALTITUDE RESTRICTIONS ETC) MAY BE INCLUDED IN THE ATC CLEARANCE PRIOR TO TAKE-OFF.

INITIAL CLIMB: MNM TURNING ALTITUDE ACCORDING TO RTE CODING. PDG 300 FT / NM (5.0 %) UNTIL 4000 FT BASED ON AIRSPACE RESTRICTIONS.

CLIMB ALTITUDE: CLIMB TO 4000 FT OR ASSIGNED ALTITUDE IF LOWER. CLIMB TO A HIGHER LEVEL ONLY WHEN CLEARED BY ATC.

RADIO CONTACT: MAINTAIN TWR FREQ UNTIL 1500 FT, THEN CONTACT HELSINKI RADAR FREQ ACCORDING TO RTE.

RNAV RTE	HELSINKI RADAR
DEVKA 1F	119.100
PENAD 5F	119.100

NOISE ABATEMENT: ACCORDING TO EFHK AD 2.21.4

ATS ROUTES: EXPECT DCT CLR OR VECTORS TO THE ATS ROUTE AFTER SID

AREA MNM ALT: SEE AMA INDEX, AIP ENR 6.1 - 3

EFHK RNAV SID RWY 22L										
RTE NAV SPEC	SEQ NR	P/T	WPT		MAG	GEO TR	DIST NM	Turn Direction	Constraints	
			ID	Flyover					LVL	Speed
DEVKA 1F RNAV 1 or P-RNAV	010	CA	-	-	219°	227.4°T	-		A730+	
	020	CF	VAVIS	-	200°	208.4°T	-			K230-
	030	TF	DEVKA	-	196°	204.4°T	5.6			K230-
PENAD 5F RNAV 1 or P-RNAV	010	CA	-	-	219°	227.4°T	-		A730+	
	020	CF	VAVIS	-	200°	208.4°T	-	L		K230-
	030	TF	HK418	-	107°	115.2°T	5.1	L	A2500+	K230-
	040	TF	PENAD	-	063°	071.8°T	15.5			

WPT COORD
SEE PAGE EFHK AD 2.15 - 1